

**External input / output
module**

TECHNICAL MANUAL

UTI-BSUW

99608 UTI-BSUW – YUD type
99612 UTI-BSUW – YUB/3TA16 type
99613 UTI-BSUW – RNKY type
99614 UTI-BSUW - RNNYM type

For FUJITSU-GENERAL
indoor units controlled by
wired remote controller
UTB-YUD
UTB-YUB / AR(UTH)-3TA16
UTY-RNKY
UTY-RNNYM



APPLICATION

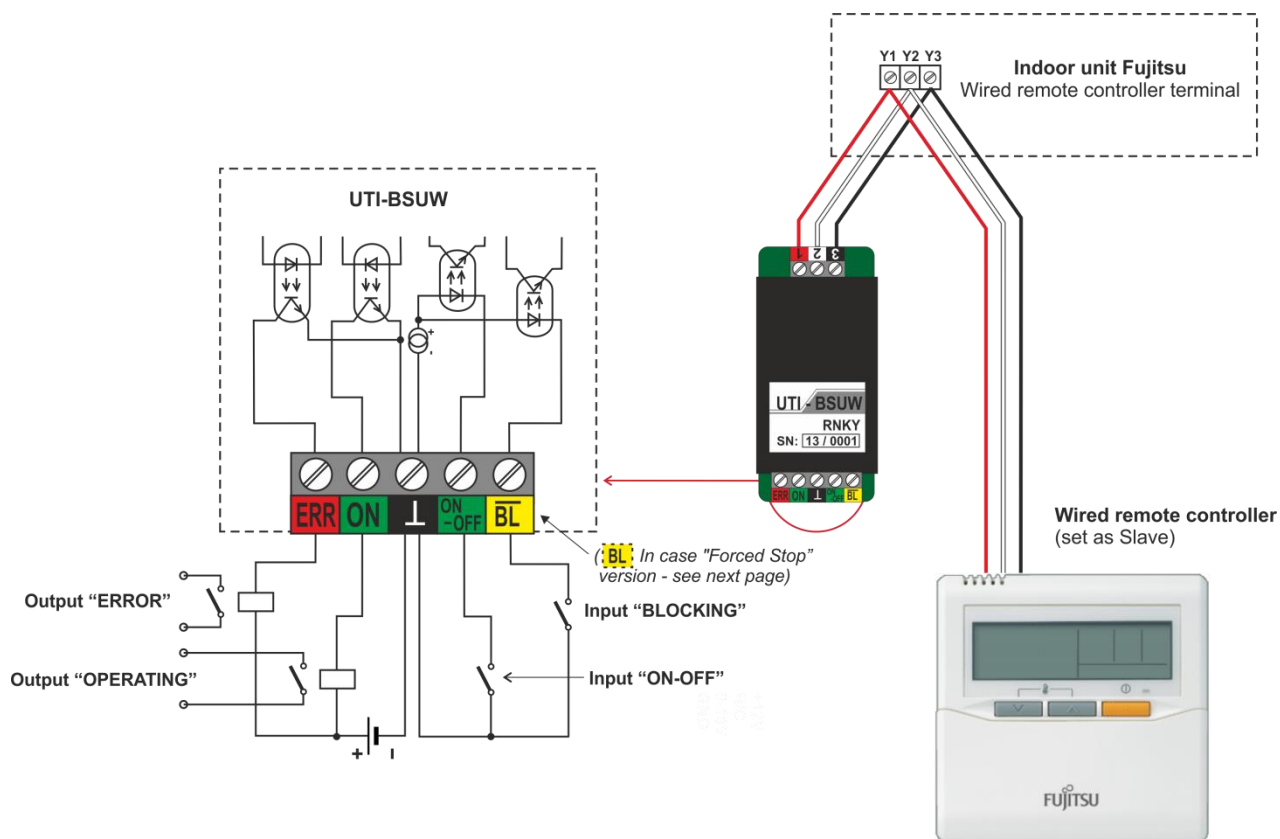
The UTI-BSUW is expansion module for indoor units equipped by wired remote controller connection port, with external input and outputs:

The compliance with installation instructions provided in this documentation is necessary to ensure technical parameters and reliable operation.

All construction work associated with installing and connecting the module may be performed only by a person with qualifications in the field installation and servicing of air conditioning Fujitsu licensed to work on electrical and cooling equipment.

INSTALLATION

When installing the UTI-BSUW module to the indoor unit, it is necessary to connect it to the terminal block designed to connect the wired remote control. The module, due to its small dimensions, can easily be placed into the interior of the unit.



Specification of inputs/outputs:

- Inputs ON-OFF, BLOCKING: maximum load 12 VDC/10 mA.
- Outputs OPERATING, ERROR: maximum load 24 VDC/50 mA

NOTE:

The UTI-BSUW module is set as Master. If it is paralelly connected with a wired remote controller, then it must be set as Slave – see Installation manual of the relevant remote controller.

- **UTB-YUB, AR-3TA16:** DIP SW1-1 = ON, DIP SW1-2 = ON
- **UTB-YUD, UTY-RNKY, UTY-RNNYM:** DIP SW1-2 = ON (DIP SW1-1 is always OFF – do not change!)

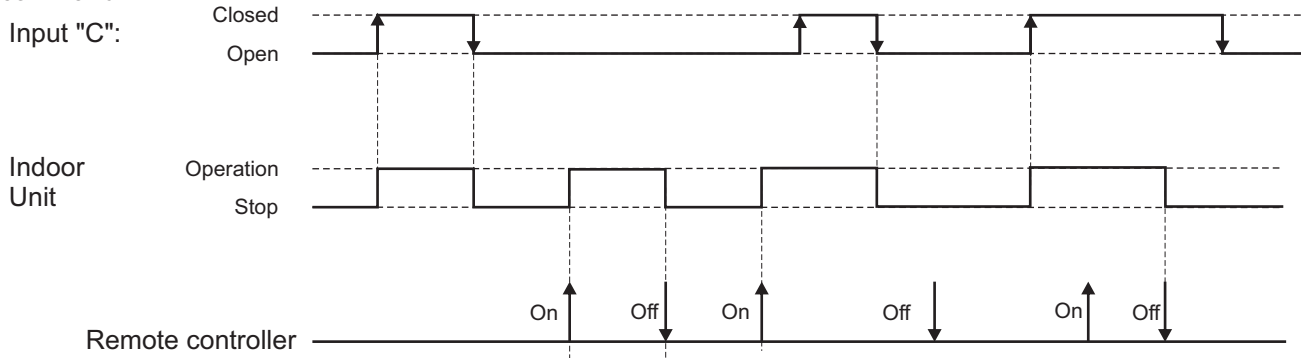
SPECIFICATION OF INPUTS

Input ON -OFF (function "Start / Stop"):

Control by voltage-free contact (load 12VDC / 10mA).

Closed = Operation, Open = Stop (standby mode).

In the Operation and Stop mode, the unit can be operated by a remote controller, the priority is of the last received command.



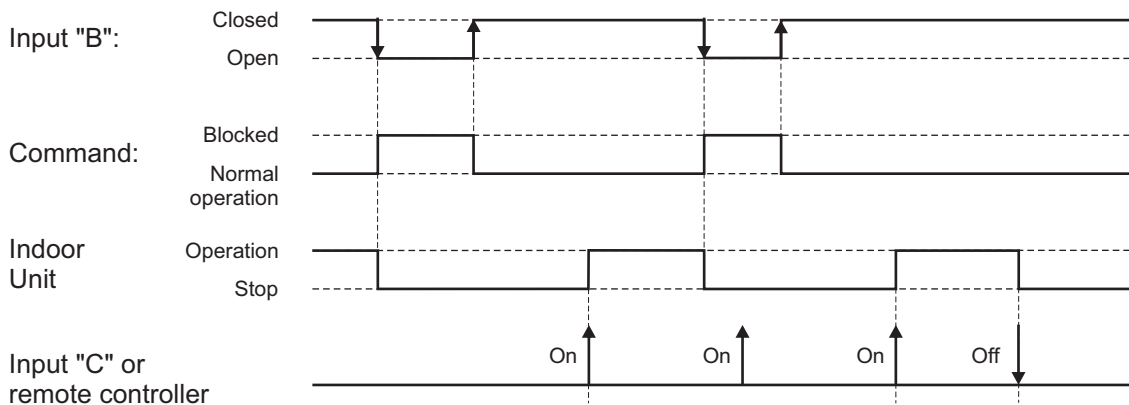
Input BL (function blocking, type "Window contact"):

Turning off and blocking of the the unit's operation by voltage-free contact (load 12VDC / 10mA).

Closed = normal mode - the unit can be operated both by a remote controller and by the input ON-OFF.

Open = blocking mode - turning off the unit into the blocking mode. For the duration of the blocking signal, the unit cannot be turned on by the remote controller nor by the input ON-OFF. When the blocking signal is off, the unit will go to the stop mode (standby) and can be switched on by a remote controller and by the signal ON.

WARNING! If this input is not used, a jumper must be connected to a common terminal module, otherwise the unit is blocked and cannot be controlled!



Input BL (function blocking, type "Forced Stop")*:

Turning off and blocking of the the unit's operation by voltage-free contact (load 12VDC / 10mA).

Open = normal mode - the unit can be operated both by a remote controller and by the input ON-OFF.

Closed = blocking mode - turning off the unit into the blocking mode. For the duration of the blocking signal, the unit cannot be turned on by the remote controller nor by the input ON-OFF. When the blocking signal is off, the unit will go to the stop mode (standby) and can be switched on by a remote controller and by the signal ON.

* (Request for this specification must be given in the order).

